

LR20 Series Features

- Contaminant removal to the sub-micron level
- Prevention and removal of sludge and varnish
- Removal of oxide insolubles and biological contamination
- Removal of ferrous and non-ferrous contamination
- Efficient and highly effective water removal with coalescer option
- Highest flow rates in the industry
- Extends the life of antioxidant additives by removing products of oxidation

Treatable Fluids

- Lubricating oil
- Hydraulic oil
- Phosphate ester
- Machining oil
- Diesel fuel
- Vegetable oil
- EDM fluid
- Dielectric fluids
- Turbine oil
- Many other non-conducting fluids

Isopur LR20 Series Fluid Purification

The ISOPur LR20-Series is the smart purification solution for fluid flow in the 30-120 GPH (114 to 454 LPH) range. The LR20-Series contains ISOPur's patented Balanced Charge Agglomeration (BCA™) technology, which maintains hydraulic and Lubricating fluids in pristine condition and prevents/removes the buildup of sludge and varnish. BCA™ is paired with the intelligence of SmartPak™, in the PLC version, which automatically senses fluid condition and adjusts accordingly.

The LR20 Series is also available in a simplified control version.

Both versions of the LR20-Series contain the new advanced Charging and Mixing Unit (Patent Pending)



LR20 FULL ELECTRONICS

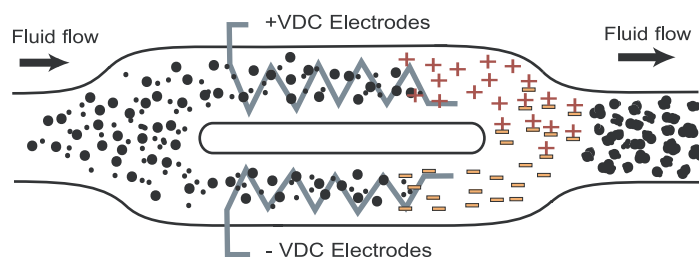


LR20 SIMPLIFIED ELECTRONICS

What is BCA™?

What is BCA™? Balanced Charge Agglomeration (BCA™) works by pumping non-conducting fluids past electrodes that ionize contamination particles equally positive (+) and negative (-). The oppositely charged particles are mixed, attract to each other, and grow in size. These agglomerated particles are then easily removed by traditional filtration methods.

BCA™ Process



Agglomerated particles now easily filterable

SmartPak™ Features



LR Series PLC Display

SmartFlow

Automatic Temperature, Pressure, and Flow

Optimizes Flow Rate

FilterMinder

Filter Change Auto Reminder
Unusual Flow/Pressure Alarms

SmartView

Display Real-Time Conditions
Easy Custom Programming

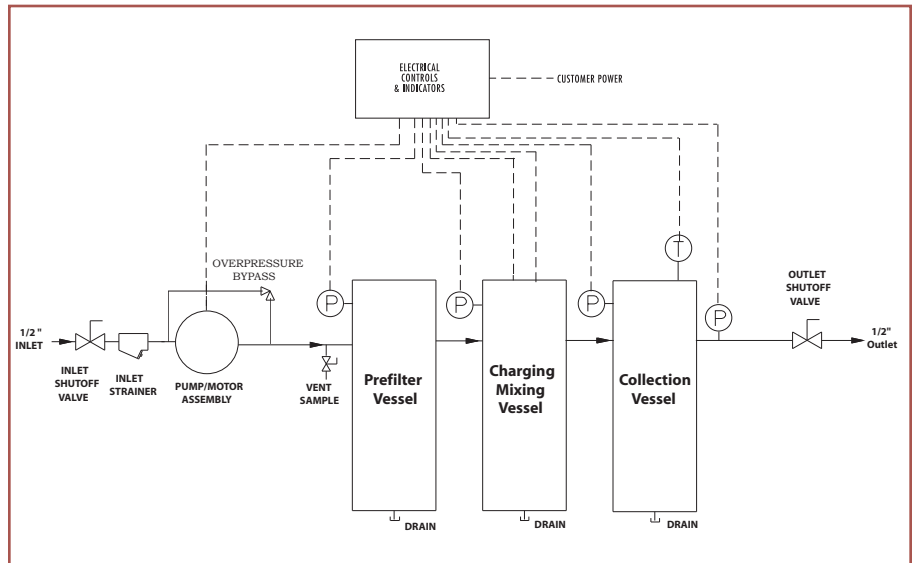
Phosphate Ester Standard

Options:

- Simplified Version
- No PLC
- Two Speed Operation
- Mechanical Gauge

- Explosion Proof:
 - NEMA 7, NFPA, ATEX
- Casters

ISOPur LR20 Series Specifications



	USA	International
Flow Rate	30 to 120 GPH	114 to 454 LPH
Dimensions (H x W x D)	39in x 25in x 21in	100cm x 64cm x 53 cm
Servicing Area (H x W x D)	39in x 33in x 45in	100cm x 84cm x 115 cm
Filter Change Area	5.3in under Vessel	13cm
Weight Dry	155 lbs	70 kg
Weight Wet	179 lbs	81 kg
Pump Discharge Pressure	2 to 80 psig	0.14 to 5.5 Bars
Fluid Temperature Range	65 to 200 deg F	18 to 93 deg C
Minimum Flash Point	140 deg F	60 deg C
Pump Type	Positive Displacement Gear Pump	
Motor	TEFC, EPFC, ATEX	
RPM	600 to 1800 RPM	
Power	0.5 HP	0.375 Kw
Mains Supply (Volts/Hz)	115/60	220 -240/50
Amps	Dedicated 15 Amp Branch Service	
Fluid Viscosity*	2 to 220cSt at 40 deg C	
Ambient Humidity Range	Up to 95% Non-condensing	
Pre-filter Cartridge	ISOPur Custom	
Collection Filter Cartridge	ISOPur Custom	
Storage Ambient	0 to 132 deg F	-18 to 55 deg C
Suction Connection	0.5 in NPT	0.5 in NPT
Discharge Connection	0.5 in NPT	0.5 in NPT