

HR-Series

ISOPur HR-Series Fluid Purification

Treatable Fluids

- Lubricating oil
- Hydraulic oil
- Phosphate ester
- Machining oil
- Diesel fuel
- Vegetable oil
- EDM fluid
- Dielectric fluids
- Turbine oil
- Many other non-conducting fluids

What is BCA™?

Balanced Charge Agglomeration (BCA™) works by pumping non-conducting fluids past electrodes that ionize contamination particles equally positive (+) and negative (-). The oppositely charged particles are mixed, attract to each other, and grow in size. These agglomerated particles are then easily removed by traditional filtration methods.

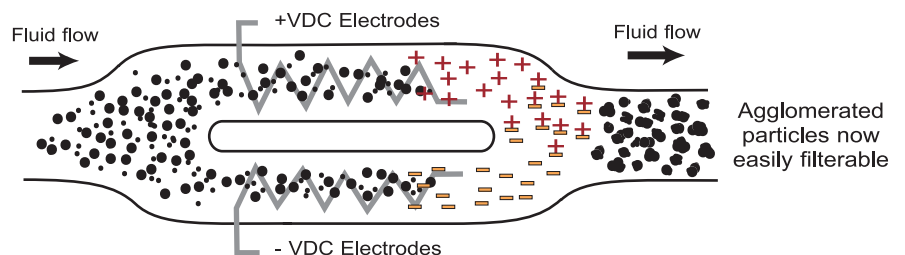


The ISOPur **HR-Series** is the smart fluid purification solution for flow rates in the 600 to 1200 GPH (2300 to 4500 LPH) range. ISOPur's on-board Balanced Charge Purification (BCP™) technology purifies hydraulic and lubricating fluids as well as *prevents/removes the buildup of sludge and varnish*. BCP™ is paired with SmartPak™, an automatic fluid sensor.

HR-Series Features

- Contaminant removal to the sub-micron level
- Prevention of sludge and varnish formation
- Removal of oxide insolubles and biological contamination
- Removal of ferrous and non-ferrous contamination
- Efficient and highly effective water removal with coalescer
- Highest flow rates in the industry
- Explosion Proof Certified (Class 1, Div. 2, Groups C & D)

BCA™ Process



HR-Series Standard Specifications



HR-Series PLC Display

SmartPak™ Features

SmartFlow

- Automatic temperature, pressure, & flow sensing
- Optimizes flow rate

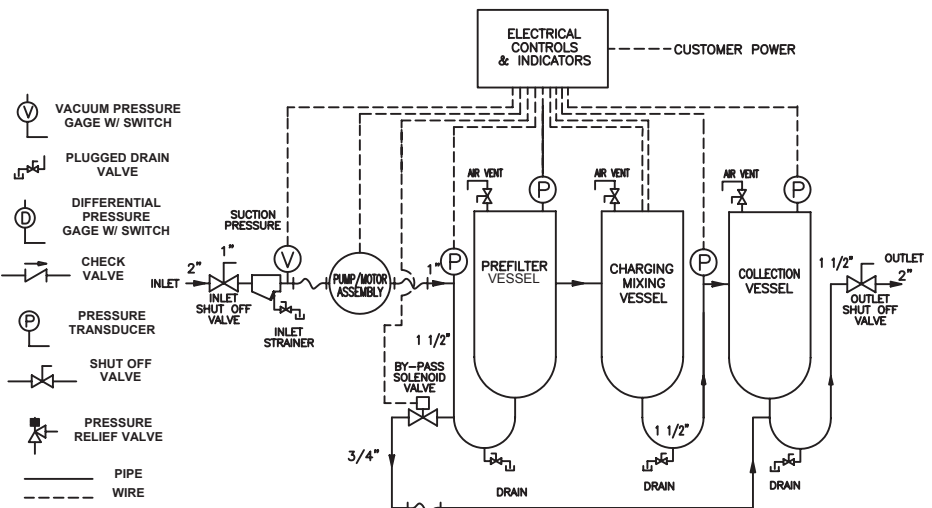
Filter Minder

- Filter change auto-reminder
- Unusual flow/pressure alarms

SmartView

- Displays real-time conditions
- Easy custom programming

	USA	International
Flow rate	600 to 1200 GPH	2300 to 4500 LPH
Dimensions (h x w x d)	56in x 54in x 33in	142cm x 137cm x 84cm
Servicing area (h x w x d)	68in x 66in x 45in	173cm x 168cm x 114cm
Filter change area	24in from top of unit	61cm
Weight dry	800 lbs	363 kg
Weight wet	1062 lbs	482 kg
Pump discharge pressure	12 to 80 PSIG	0.7 to 5.5 Bars
Fluid temperature range*	65 to 200 F	18 to 93 C
Minimum fluid flash point	140 F	60 C
Pump type	Positive displacement	
Electric motor	ISOPur	
RPM	900 to 1800	
Power	1.5 hp	1.12 Kw
Mains supply (Volts/Hz)	220-480/60	230-400/50
Amps	Dedicated 15 amp branch service	
Fluid viscosity*	2 to 220cSt at 40 C	
Ambient humidity range	Up to 95% non-condensing	
Pre-filter	ISOPur custom	
Collection cartridge	ISOPur custom	
Transportation & storage	0 to 132 F	-18 to 55 C
Suction connection	2" ANSI raised flange	5.1 cm
Discharge connection	2" ANSI raised flange	5.1 cm



*Contact an ISOPur representative for operation outside of recommended ranges. ISOPur reserves the right to change specifications without notice.