

MR-Series Features

- Contaminant removal to the sub-micron level
- Prevention and removal of sludge and varnish
- Removal of oxide insolubles and biological contamination
- Removal of ferrous and non-ferrous contamination
- Efficient and highly effective water removal with coalescer option
- Highest flow rates in the industry
- Extends the life of antioxidant additives by removing products of oxidation

Treatable Fluids

- Lubricating oil
- Hydraulic oil
- Phosphate ester
- Machining oil
- Diesel fuel
- Vegetable oil
- EDM fluid
- Dielectric fluids
- Turbine oil
- Many other non-conducting fluids

ISOPur MR-Series Fluid Purification

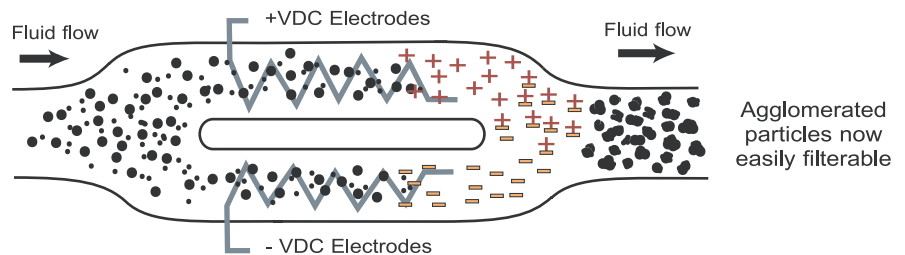
The ISOPur MR-Series is the smart purification solution for fluid flow rates in the 150 to 600 GPH (570 to ~2300 LPH) range. The MR-Series contains ISOPur's patented Balanced Charge Agglomeration (BCA™) technology, which maintains hydraulic and lubricating fluids in pristine condition and prevents/removes the buildup of sludge and varnish. BCA™ is paired with the intelligence of SmartPak™, which automatically senses fluid condition and adjusts accordingly.

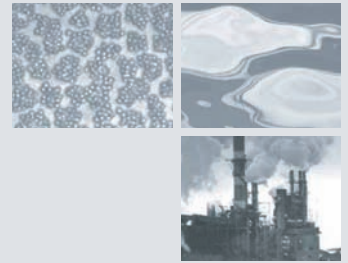


What is BCA™?

What is BCA™? Balanced Charge Agglomeration (BCA™) works by pumping non-conducting fluids past electrodes that ionize contamination particles equally positive (+) and negative (-). The oppositely charged particles are mixed, attract to each other, and grow in size. These agglomerated particles are then easily removed by traditional filtration methods.

BCA™ Process





SmartPak™ Features



MR-Series PLC Display

SmartFlow

Automatic temperature, pressure, and flow sensing

Optimizes flow rate

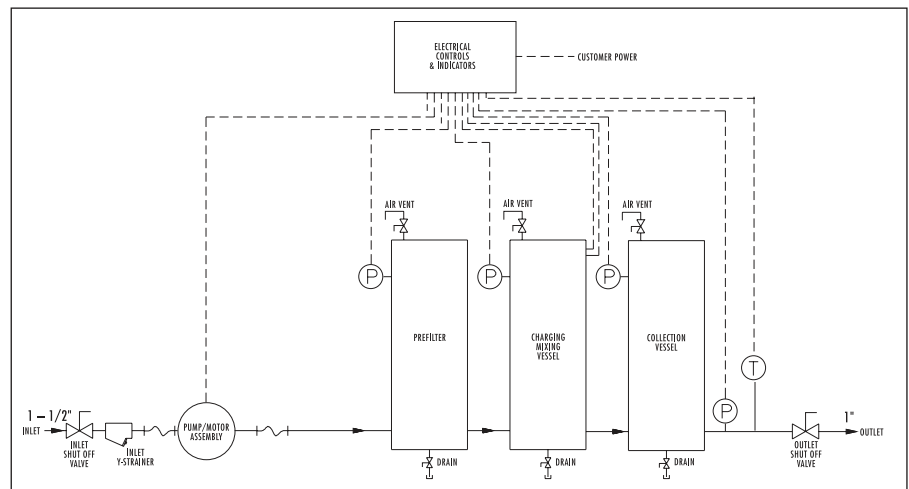
Filter Minder

Filter change auto-reminder
Unusual flow/pressure alarms

SmartView

Displays real-time conditions
Easy custom programming

ISOPur MR-Series Specifications



	USA	International
Flow rate	150 to 600 GPH	567 to 2278 LPH
Dimensions (H x W x D)	56in x 35.5in x 21in	142cm x 90cm x 53cm
Servicing area (H x W x D)	72in x 42in x 30in	183cm x 107cm x 76cm
Filter change area	24in from top of unit	61cm
Weight dry	366 lbs	166 kg
Weight wet	414 lbs	188 kg
Pump discharge pressure	2 to 80 PSIG	0.14 to 5.5 Bars
Fluid temperature range*	65 to 200 F	18 to 93 C
Minimum fluid flash point	40 F	4.4 C
Pump type	Positive displacement	
Electric motor	ISOPur	
RPM	600 to 1900	
Power	1.0 hp	0.75 Kw
Mains supply (Volts/Hz)	115-480/60	230-400/50
Amps	Dedicated 15 Amp branch service	
Fluid viscosity*	2 to 220cSt at 40 C	
Ambient humidity range	Up to 95% non-condensing	
Pre-filter	ISOPur custom	
Collection cartridge	ISOPur custom	
Transportation & storage	0 to 132 F	-18 to 55 C
Suction connection	1.5" NPT	3.81 cm
Discharge connection	1" NPT	2.54 cm